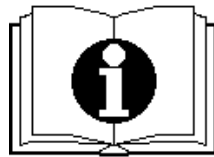




— SCHEMATIC DRAWINGS —

装配示意图



手推式洗地机 T70 / 65 BT+

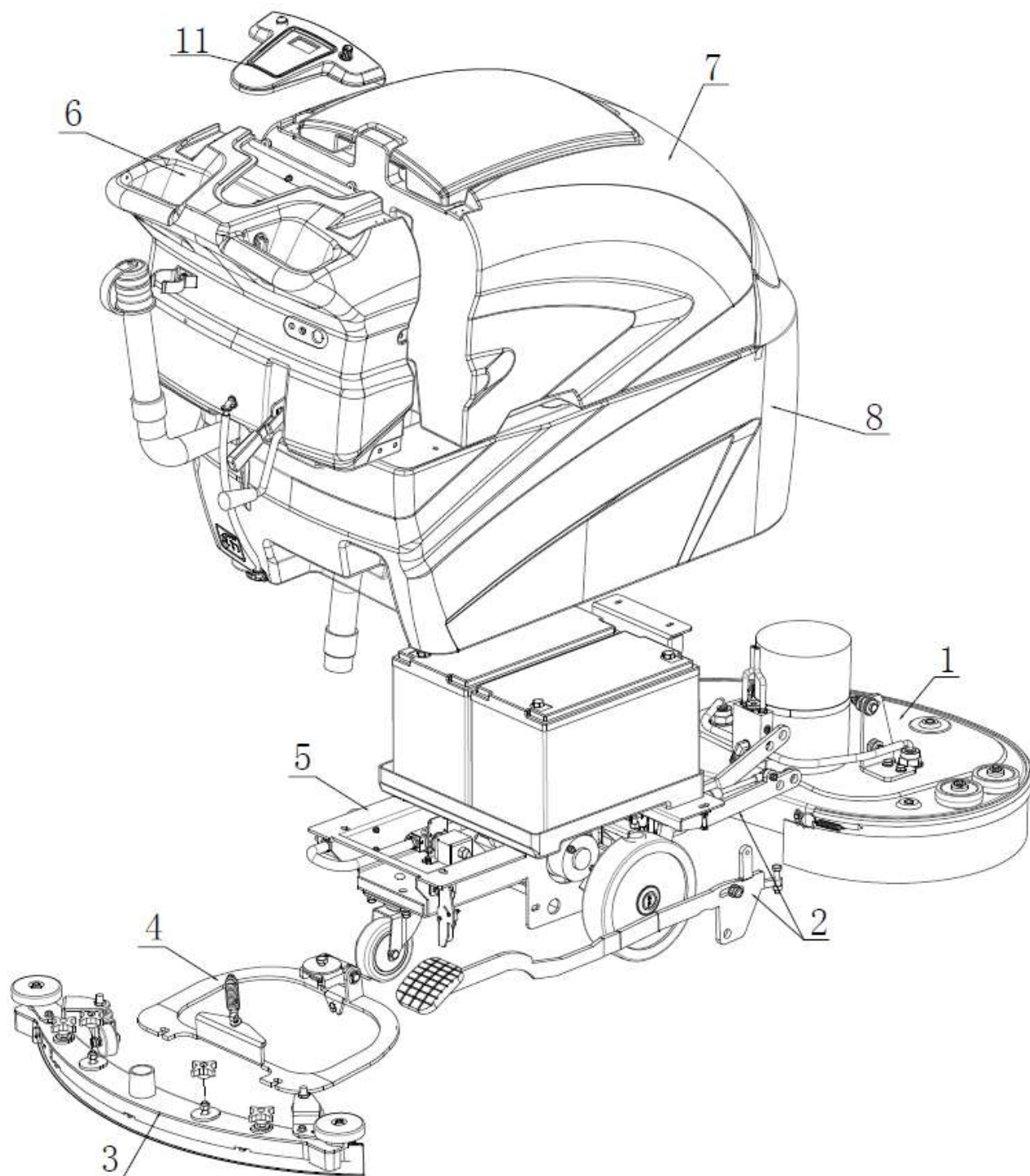
Scrubber Dryer T70 / 65 BT+

Issued in 2015 June

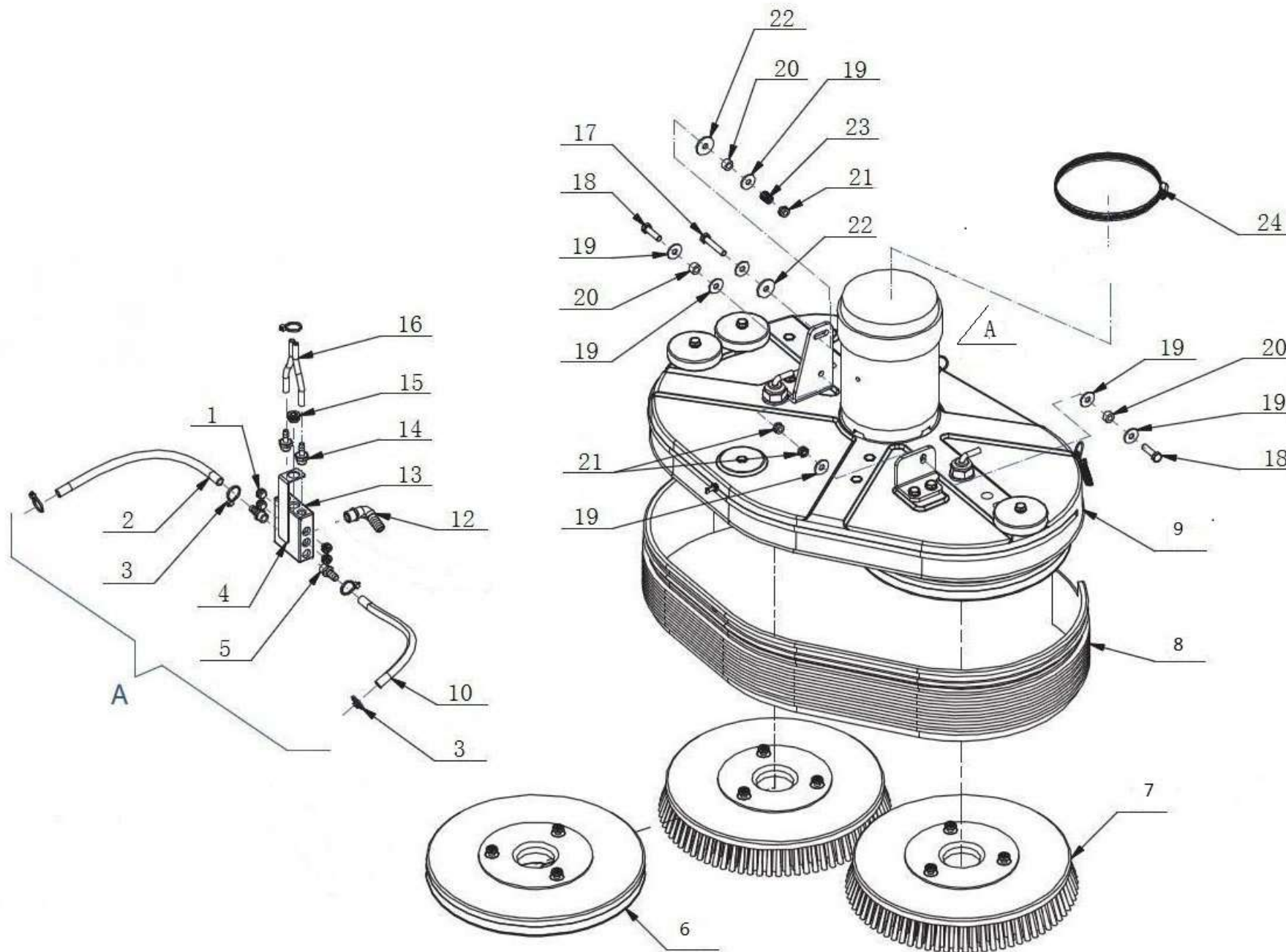
Version: V01



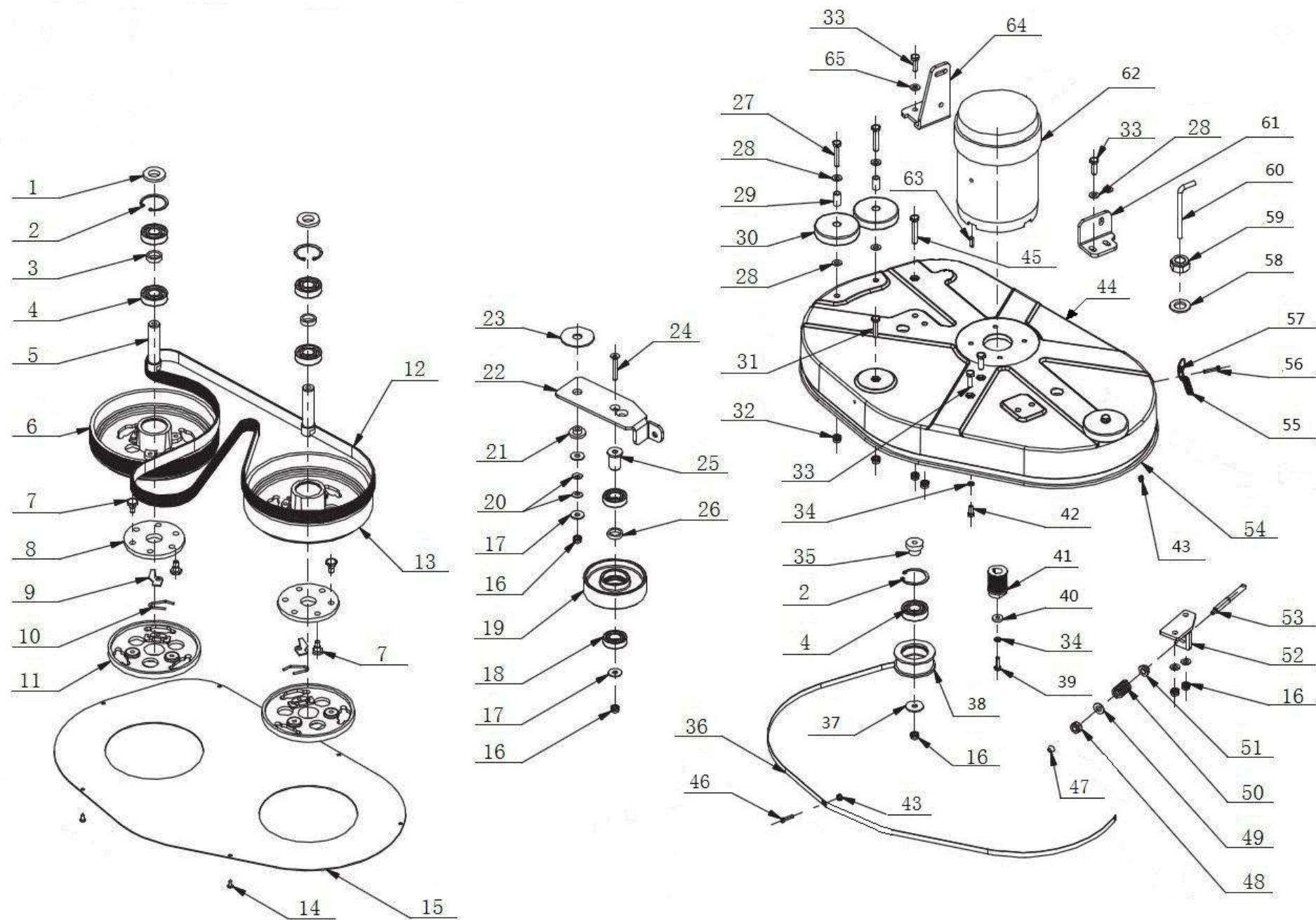
## 目 录



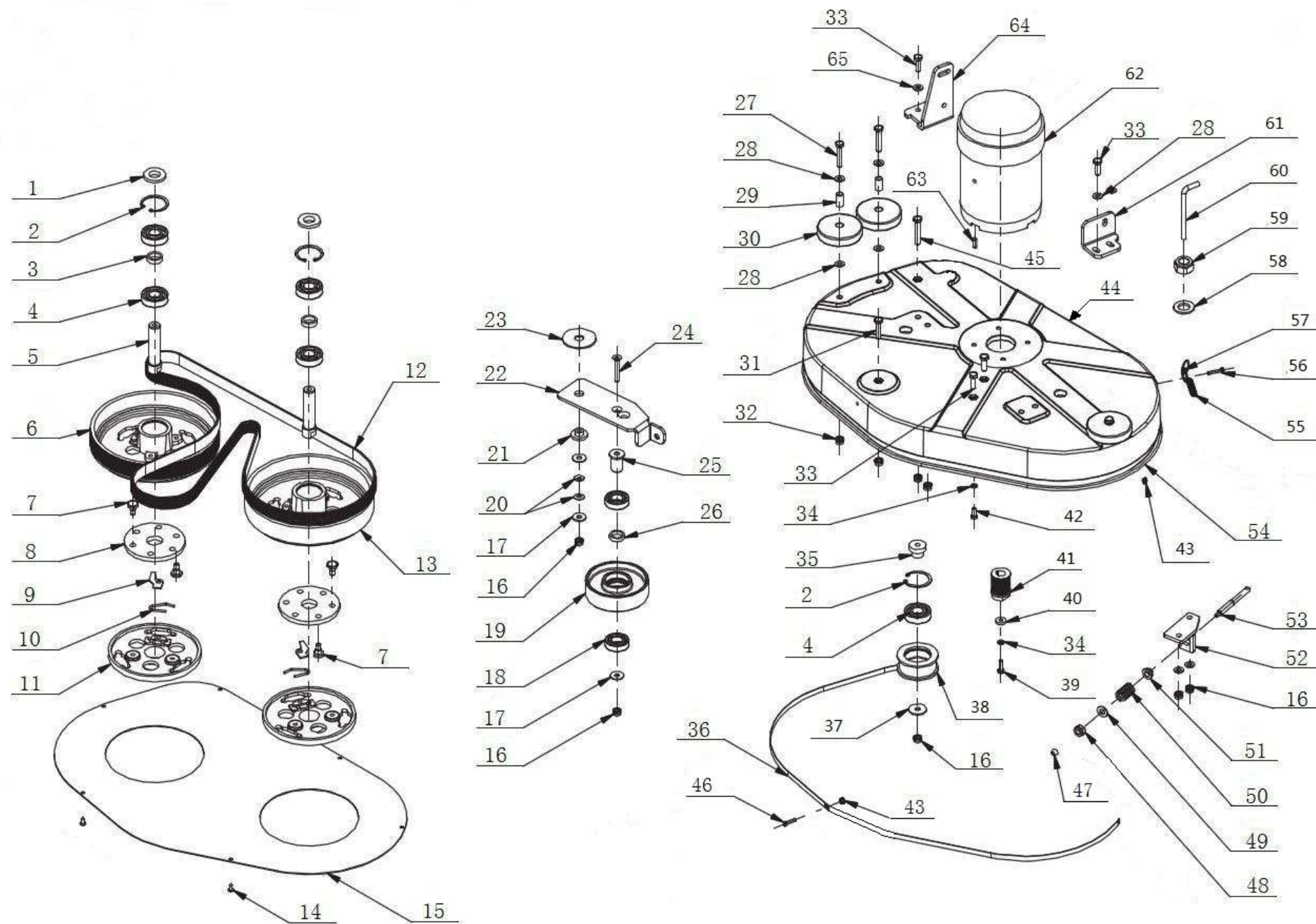
1. 机头组件·····	1—7
NOSE ASSEMBLY	
2. 机头连接件、脚踏件·····	8—9
NOSE CONNECT	
3. 扒头组件·····	10—11
SQUEEGEE ASSEMBLY	
4. 扒头支架组件·····	12—14
SQUEEGEE CONTROL ASSEMBLY	
5. 底座架组件·····	15—18
FRAME ASSEMBLY	
6. 手柄盒组件·····	19—22
HANDLE BOX ASSEMBLY	
7. 污水箱组件·····	23—24
RECOVERY TANK ASSEMBLY	
8. 水箱体组件·····	25—28
WATER TANK ASSEMBLY	
9. 水路组件·····	29—30
WATER ASSEMBLY	
10. 整机组件·····	31—32
MACHINE ASSEMBLY	
11. 控制面板组件·····	33—34
CONTROL PANEL ASSEMBLY	
12. 附件·····	35
ACCESSORIES	



项目号 ITEM	零件号 P/N	数量 QTY	名称	DESCRIPTION
1	F020008	4	内六角堵头 1/4	PLUG 1/4
2	F050015	1	水管 D=12 d=8 L=300	WATER PIPE D=12 d=8 L=300
3	N090001	5	扎带 2.5X100	CLAMP QLS-200M 2.5X98
4	A040001	1	分水器支架 110x33	SUPPORT 110x33
5	F020015	2	快速接头 3/8 D=10 d=8	CONNECTOR 3/8 D=10 d=8
6	N150005	2	针盘 13 “	PAD HOLDER CENTER LOCK 13 “
7	N150002	2	刷盘 13 “PP 0.6	BRUSH-PPL 13 “PP 0.6
8	C030001	1	刷盘防溅条 110x1570	RUBBER SKIRT 110x1570
9	W010001	1	机头组件 T70	NOSE ASEEMBLY T70
10	F050016	1	水管 D=12 d=8 L=250	WATER PIPE D=12 d=8 L=250
12	F020005	1	快速弯头 3/8” d=11	CONNECTOR 3/8” d=11
13	B050001	1	分水器 80x65	DISTRIBUTOR 80x65
14	F020011	2	快速接头 1/4 D=7	CONNECTOR 1/4 D=7
15	F020007	1	内六角 T 型堵头 3/8	PLUG T 3/8
16	F050017	2	水管 D=8 d=5 L=105	WATER PIPE D=8 d=5 L=105
	W020012		分水器组件 T70	DISTRIBUTOR ASEEMBLY T70
17	N010003	1	外六角 M8x45 镀锌	SCREW M8x45 ZINC
18	N010002	2	外六角 M8x30 镀锌	SCREW M8x30 ZINC
19	N030002	7	平垫 9x24x2.5 镀锌	WASHER 9x24x2.5 ZINC
20	B020001	3	铜套 D=14.9 d=8 S=8.5	BUSHING D=14.9 d=8 S=8.5
21	N020001	3	自锁螺母 M8x8.5 镀锌	LOCK NUT M8x8.5 ZINC
22	N030012	2	平垫 8.5x30x3 尼龙	WASHER 8.5x30x3 NYLON
23	B060001	1	压簧 1.5x12x15	SPRING 1.5x12x15
24	F050005	1	卡箍, Φ130-152	SCREW CLAMP Φ130-152



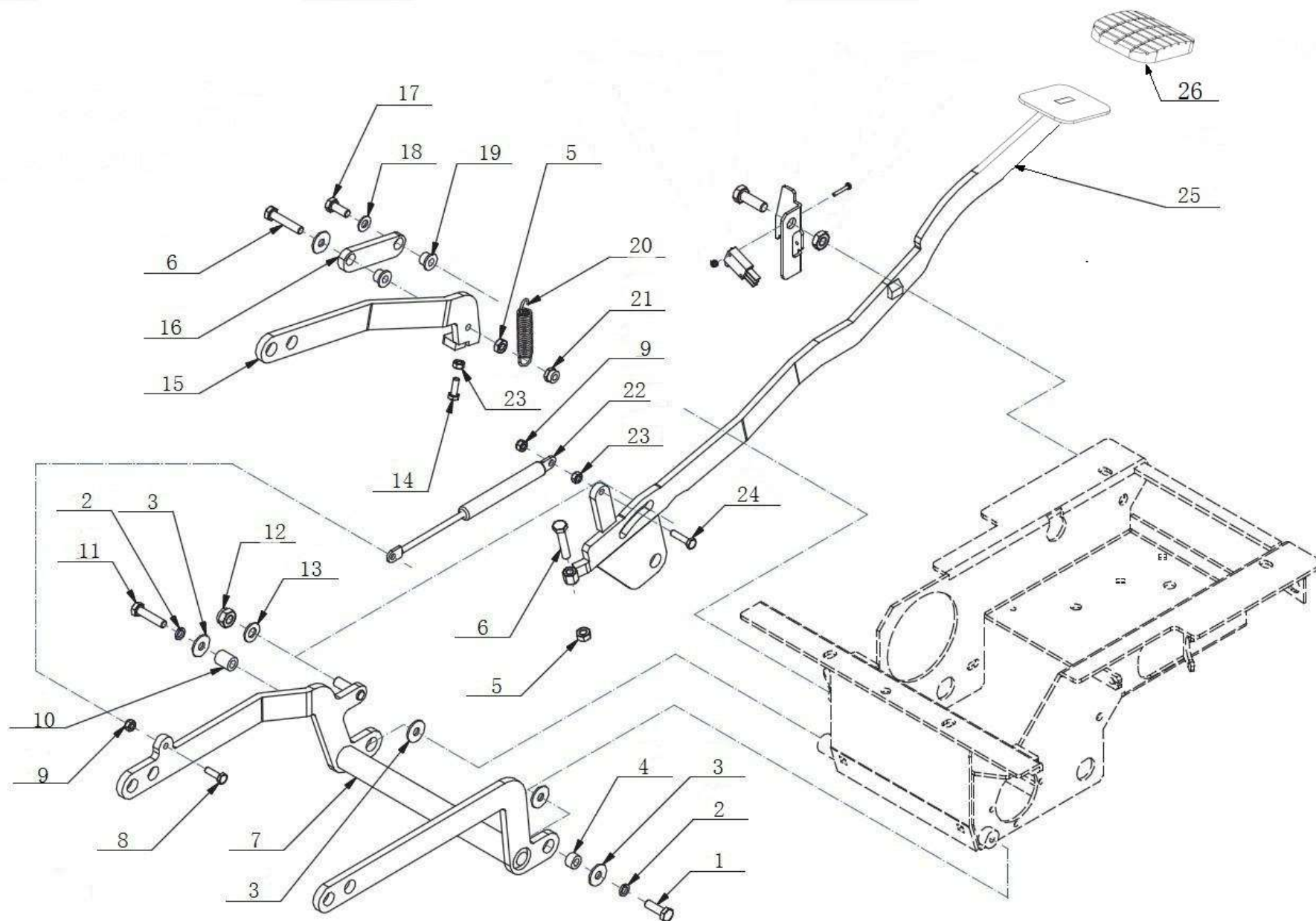
项目号 ITEM	零件号 P/N	数量 QTY	名称	DESCRIPTION
1	B060009	2	轴套 20x27x40x (8-3)	BUSHING 20x27x40x (8-3)
2	N060002	3	挡圈 $\Phi$ 48	SEEGER RING $\Phi$ 48
3	B060087	2	垫圈 20x27x8	SPACER 20x27x8
4	N070002	5	轴承 6204	BEARING 6204
5	B010001	2	皮带轮轴 20x98	SHAFT 20x98
6	D010002	1	有牙皮带轮 $\Phi$ 228x44	PULLEY $\Phi$ 228x44
7	B060003	12	减震器螺栓 M8	STUD BOLT $\Phi$ 228x44
8	B050002	2	橡胶减震器 $\Phi$ 82	FLEXIBLE COUPLINE $\Phi$ 82
9	A040004	2	刷盘挡片 45x25	PLATE 45x25
10	B060013	2	刷盘锁紧弹簧 $\Phi$ 3	SPRING $\Phi$ 3
11	D010005	2	刷盘锁紧器	COUPLER
12	N090012	1	多楔带 PJ 1992	BELT PJ 1992
13	D010003	1	无牙皮带轮 $\Phi$ 228x44	PULLEY $\Phi$ 228x44
14	N010011	6	圆头十字自攻螺丝 4.8x13	SPECIAL SCREW 4.8x13
15	A040005	1	机头外罩盖板 691	COVER 691
16	N020001	9	自锁螺母 M8x8.5 镀锌	LOCK NUT M8x8.5 ZINC
17	N030002	3	平垫 9x24x2.5 镀锌	WASHER 9x24x2.5 ZINC
18	N070001	2	轴承 6004	BEARING 6004
19	D010004	1	皮带辅助轮 $\Phi$ 112x32	PULLEY $\Phi$ 112x32
20	N040002	2	蝶形垫片 8x18x1	CUPPED WASHER 8x18x1
21	B050003	1	四氟轴套 8x (30-15.8) x12	BUSHING 8x (30-15.8) x12
22	A040003	1	皮带调节螺栓支架 212	TIGHTENER 212
23	B050006	1	四氟垫圈 16x60x3	SPECIAL WASHER 16x60x3
24	N010012	1	沉头内六角 M8x55 镀锌	SPECIAL SCREW M8x50 ZINC
25	B060010	1	尼龙轴套 8x27x34	PIN 8x27x34



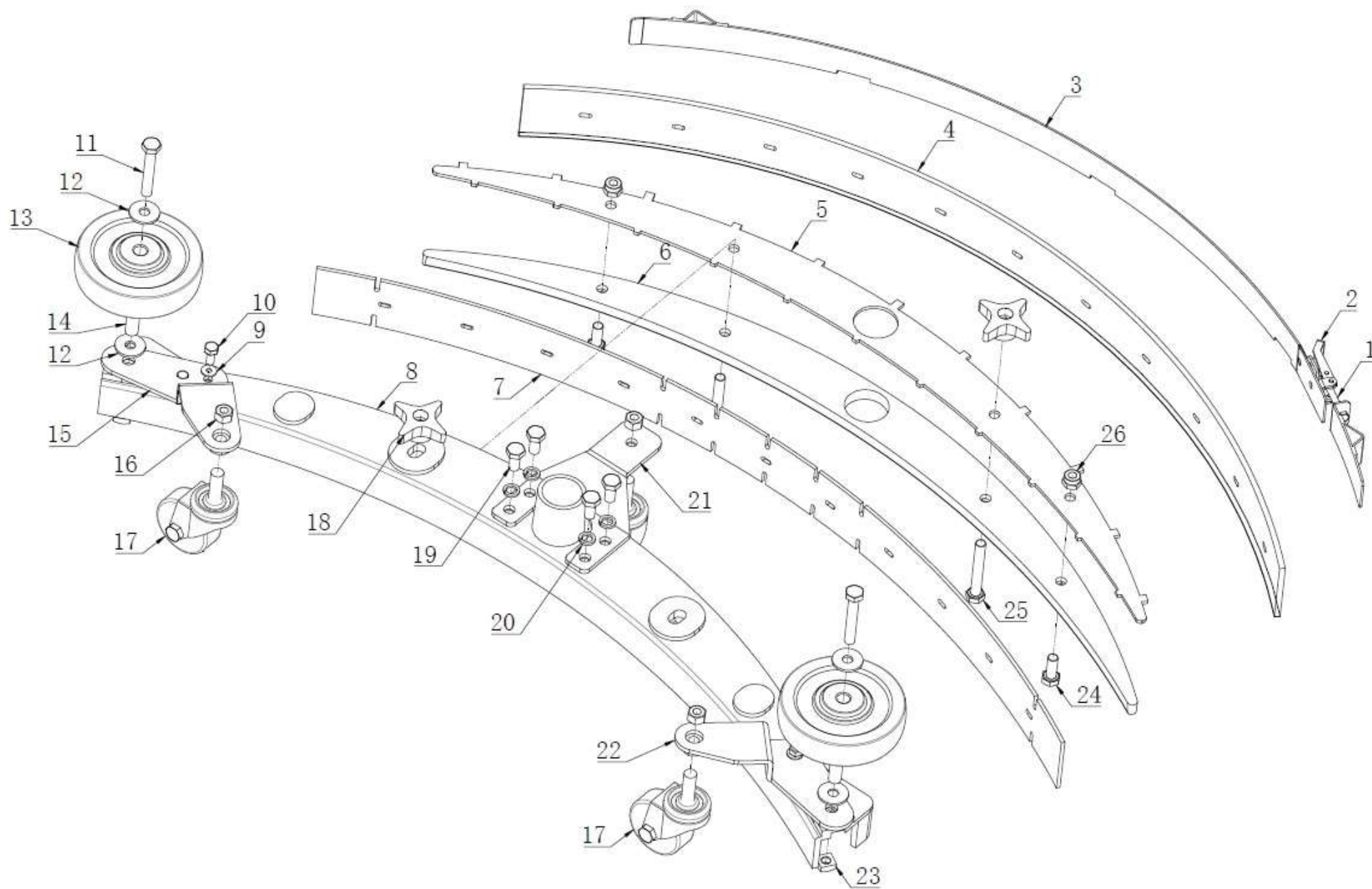
项目号 ITEM	零件号 P/N	数量 QTY	名称	DESCRIPTION
26	B060007	1	垫圈 20x27x6.2	WASHER 20x27x6.2
27	N010087	3	外六角 M6x50 不锈钢	SCREW M6x50 A2
28	N030022	6	平垫 6x18x1.6 不锈钢	WASHER 6x18x1.6 A2
29	B020010	3	防撞轮铜套 6x8x30	BUSHING 6x8x30
30	N110001	3	防撞轮 Φ75	WHEEL Φ75
31	N010008	1	外六角 M8x35 镀锌	SCREW M8x35 ZINC
32	N020006	3	自锁螺母 M6 不锈钢	LOCK NUT M6 A2
33	N010007	6	外六角 M8x25 镀锌	SCREW M8x25 ZINC
34	N040001	5	弹簧垫片 M6 镀锌	LOCK WASHER M6 ZINC
35	B060005	1	轴套 8x (30-20) x22	SPACER 8x (30-20) x22
36	A040008	1	挡泥板钢条 1340	BLADE 1340
37	N030003	1	平垫 9x32x2.5 镀锌	WASHER 9x32x2.5 ZINC
38	D010001	1	皮带导向轮 Φ73x32	PULLEY Φ73x32
39	N010006	1	外六角 M6x20 镀锌	SCREW M6x20 ZINC
40	B060006	1	垫片 6.5x18x4	WASHER 6.5x18x4
41	B060002	1	电机皮带轮轴 48x35	MOTOR PULLEY 48x35
42	N010005	4	外六角 M6x16 镀锌	SCREW M6x16 ZINC
43	N020004	2+4	法兰面螺母 M5 镀锌	NUT M5 ZINC
44	D020001	1	刷盘外罩 T70	BRUSHES BASE T70
45	N010010	1	外六角 M8x50 镀锌	SCREW M8x50 ZINC
46	N010151	1	T型螺栓 M5X20 不锈钢	SCREW M5x20 A2
47	B060036	1	球型帽 R=6	BUSHING R=6
48	N020002	1	自锁螺母 M10x10 镀锌	LOCK NUT M10x10 ZINC
49	N030004	1	平垫 10x21x2 镀锌	WASHER 10x21x2 ZINC
50	B060011	1	弹簧 3.5x20x32.5	SPRING 3.5x20x32.5



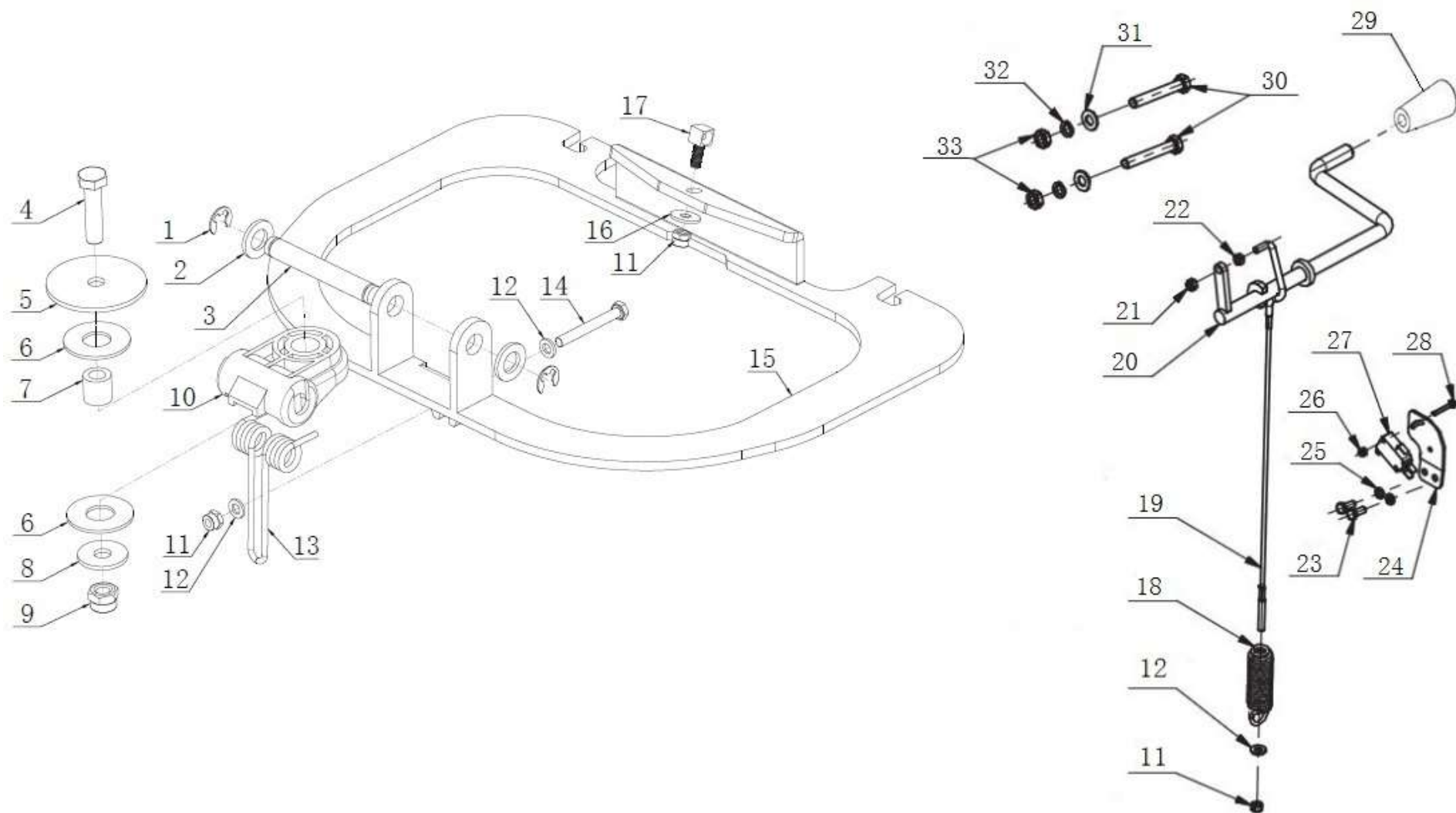
项目号 ITEM	零件号 P/N	数量 QTY	名称	DESCRIPTION
51	B050004	1	四氟轴套 10.5x20x18	BUSHING 10.5x20x18
52	A040002	1	皮带调节螺栓支架 40	TIGHTENER 40
53	B060004	1	调节螺栓 M10x100	PIN M10x100
54	N090020	1	机头护罩盖板密封垫圈	SHEATH
55	B060012	2	钢条拉簧 1.1x10x55	SPRING 1.1x10x55
56	N010009	2	外六角 M5x25 镀锌	SCREW M5x25 ZINC
57	B070010	2	异型套圈 2x26	RING 2x26
58	N030005	2	平垫 21x37x3 镀锌	WASHER 21x37x3 ZINC
59	N020039	2	自锁螺母 M20 镀锌	LOCK NUT M20 ZINC
60	B020007	2	铜管 31+106	PIPE 31+106
61	A040007	1	机头支座 47x67	SUPPORT 47x67
62	E040002	1	刷盘电机 24V 560W 1800RPM	MOTOR 24V 560W 1800RPM
63	N060008	1	矩形键 5x5x20	KEY 5x5x20
64	A040006	1	机头支座 123x64	SUPPORT 123x64
65	N030006	6	平垫 8x16x1.6 镀锌	WASHER 8x16x1.6 ZINC
	W010001		机头组件 T70	NOSE ASSEMBLY T70



项目号 ITEM	零件号 P/N	数量 QTY	名称	DESCRIPTION
1	N010007	1	外六角 M8x25 镀锌	SCREW M8x25 ZINC
2	N040013	2	弹簧垫片 M8 镀锌	LOCK WASHER M8 ZINC
3	N030027	5	平垫 8x24x2 镀锌	WASHER 8x24x2 ZINC
4	B020001	1	铜管 8x15x8.5	PIPE 8x15x8.5
5	N020018	2-1	螺母 M8 镀锌	NUT M8 ZINC
6	N010043	2-1	外六角 M8x40 镀锌	SCREW M8x40 ZINC
	N020031	1	螺母 M10 镀锌	NUT M10 ZINC
	N010026	1	外六角 M10x40 镀锌	SCREW M10x40 ZINC
7	A040009	1	机头下支架 272	FRAME 272
8	N010006	1	外六角 M6x20 镀锌	SCREW M6x20 ZINC
9	N020012	2	自锁螺母 M6x6 镀锌	LOCK NUT M6x6 ZINC
10	B020004	1	铜套 8.3x15x18.5	BUSHING 8.3x15x18.5
11	N010008	1	外六角 M8x35 镀锌	SCREW M8x35 ZINC
12	N020002	1	自锁螺母 M10x10 镀锌	LOCK NUT M10x10 ZINC
13	N030004	1	平垫 10x21x2 镀锌	WASHER 10x21x2 ZINC
14	N010006	1	外六角 M6x20 镀锌	SCREW M6x20 ZINC
15	A040011	1	机头上支架 292x66	FRAME 292x66
16	A040010	1	连接板 24x70	PLAQUE 24x70
17	N010034	1	外六角 M8x20 镀锌	SCREW M8x20 ZINC
18	N030006	1	平垫 8x17x1.6 镀锌	WASHER 8x17x1.6 ZINC
19	B020005	2	铜管 8x (18-13) x10.5	PIPE 8x (18-13) x10.5
20	B060030	1	机头拉簧 2x15x60	SPRING 2x15x60
21	N020001	1	自锁螺母 M8 镀锌	LOCK NUT M8 ZINC
22	N080002	1	气弹簧 L=225 F=300N	SPRING L=225 F=300N
23	N020022	2	螺母 M6 镀锌	NUT M6 ZINC
24	N010020	1	外六角 M6x25 镀锌	SCREW M6x25 ZINC
25	A050007	1	脚踏板 740	PEDAL 740
26	C030006	1	脚踏垫 98x80	RUBBER PAD 98x80



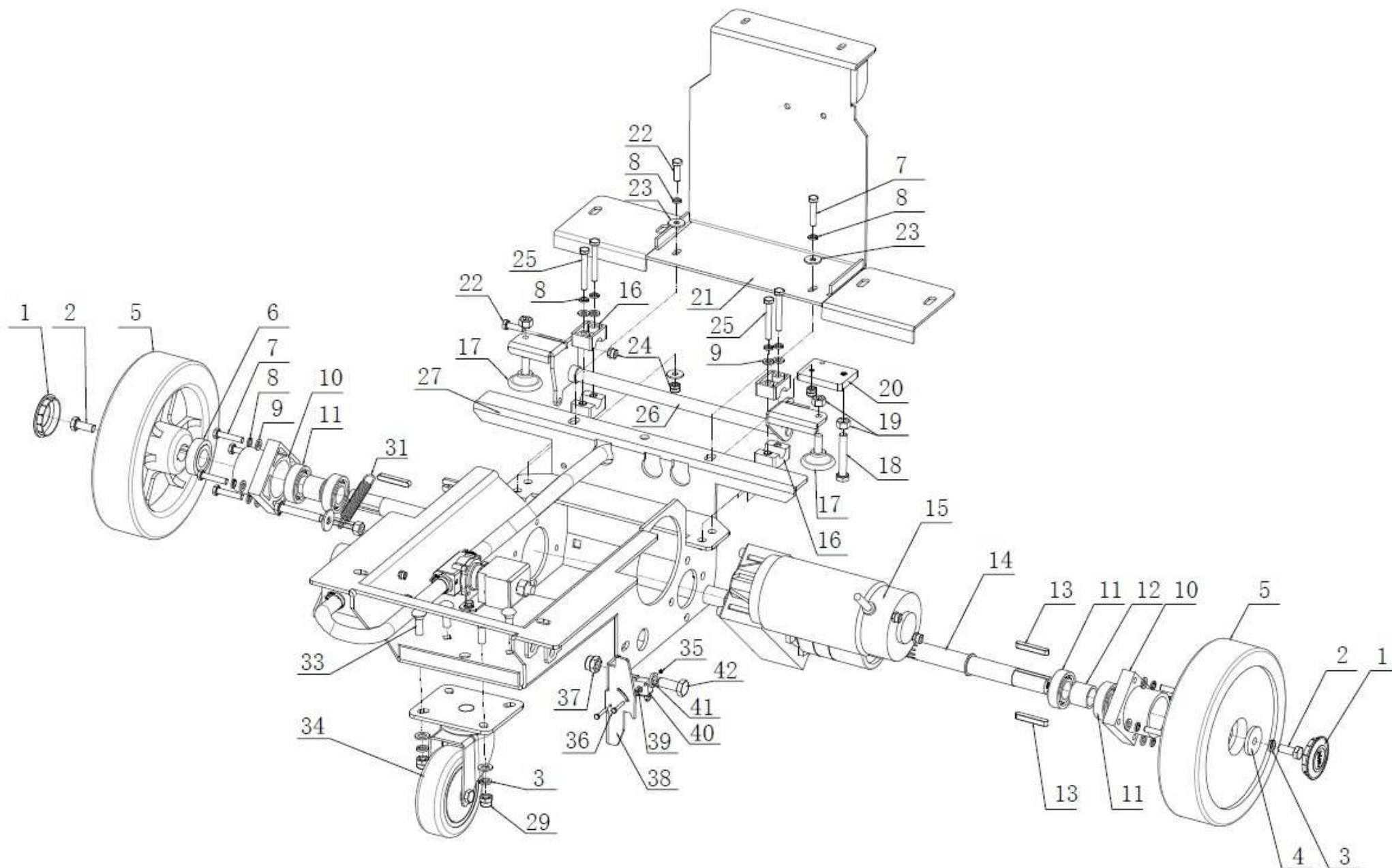
项目号 ITEM	零件号 P/N	数量 QTY	名称	DESCRIPTION
1	N010146	1	外六角 M5x55 不锈钢	SCREW M5x55 A2
2	N080009	1	不锈钢搭扣 M5	HASP M5 A2
3	A030035	1	扒头后固定钢板 820	PLATES 820
4	C030015	1	后刮条 橡胶 4.5x53x835	REAR SQUEEGE BLADE RUBBER 4.5x53x835
6	B050024	1	半月板 733	MENISCUS 733
7	C030014	1	前刮条 橡胶 3x50x785	FRONT SQUEEGE BLADE RUBBER 3x50x785
8	D010012	1	扒头主体 724	SQUEEGEE BODY 724
9	N030024	2	平垫 6x12x1.6 不锈钢	WASHER 6x12x1.6 A2
10	N010145	2	外六角 M6x12 不锈钢	SCREW M6x12 A2
11	N010144	2	外六角 M8x50 不锈钢	SCREW M8x50 A2
12	N030028	4+2	平垫 8x24x2 不锈钢	WASHER 8x24x2 A2
13	N110019	2	防撞轮 $\phi$ 100x29.5	WHEEL $\phi$ 100x29.5
14	B020027	2	防撞轮铜套 8x10x31	BUSHING 8x10x31
16	N020010	3-2	螺母 M8 不锈钢	NUT M8 A2
17	N110010	3-2	万向轮 $\phi$ 50	UNIVERSAL WHEEL $\Phi$ 50
18	N100005	2	四星螺帽 M8x22	NUT M8x22
19	N010143	4	外六角 M8x16 不锈钢	SCREW M8x16 A2
20	N040017	4	弹簧垫片 M8 不锈钢	LOCK WASHER M8 A2
21	A030051	1	万向轮支架 (中)	SUPPORT (MIDDLE)
23	N020011	2	方形螺母 M8 13x13x6 不锈钢	NUT M8 13x13x6 A2
24	N010142	2	外六角 M8x20 不锈钢	SCREW M8x20 A2
25	N010127	2	外六角 M8x70 不锈钢	SCREW M8x70 A2
26	N020010	4-2	螺母 M8 不锈钢	NUT M6 A2
	W010045	1	扒头组件 760	SQUEEGEE ASSEMBLY 760



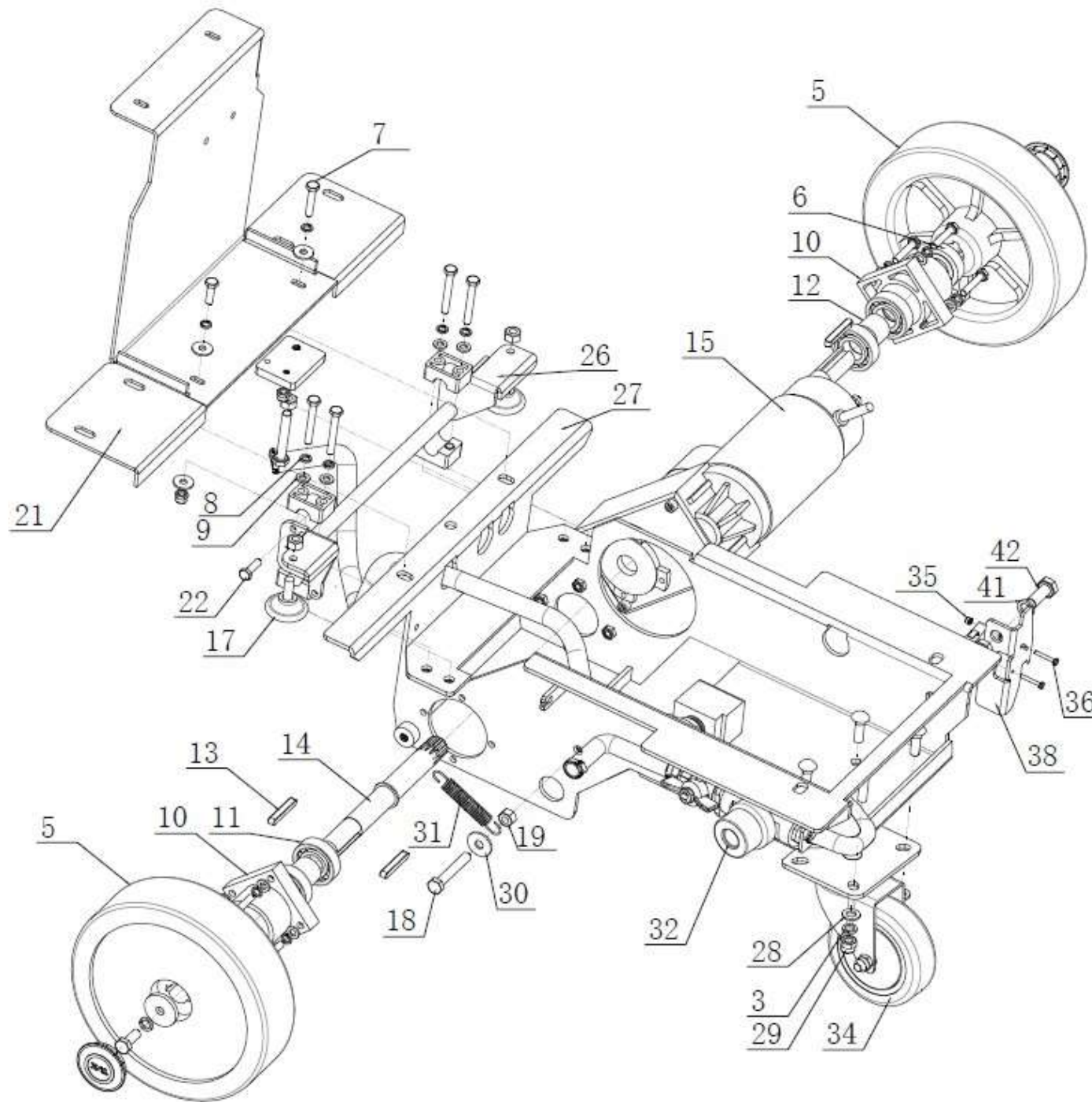
项目号 ITEM	零件号 P/N	数量 QTY	名称	DESCRIPTION
1	N080005	2	卡簧 $\phi$ 9	RING $\phi$ 9
2	N030011	2	平垫 13x24x2.5 镀锌	WASHER 13x24x2.5 ZINC
3	B060099	1	转动轴 $\phi$ 12x86	PIN $\phi$ 12x86
4	N010026	1	外六角 M10x40 镀锌	SCREW M10x40 ZINC
5	B050022	1	四氟垫片 10.2x60x3	SPECIAL WASHER 10.2x60x3
6	B050005	2	四氟垫片 17.2x40x2	SPECIAL WASHER 17.2x40x2
7	B020003	1	铜套 10.2x17x16.5	BUSHING 10.2x17x16.5
8	N040009	1	垫片 10.5 x32x4 镀锌	WASHER 10.5 x32x4 ZINC
9	N020002	1	自锁螺母 M10 镀锌	LOCK NUT M10 ZINC
10	D010007	1	转换座 58	COUPLING 58
11	N020012	3	自锁螺母 M6 镀锌	LOCK NUT M6 ZINC
12	N030007	3	平垫 6x12x1.6 镀锌	WASHER 6x12x1.6 ZINC
13	B070016	1	压力弹簧 3.5x20x40.5	SPRING 3.5x20x40.5
14	N010021	1	外六角 M6x50 镀锌	SCREW M6x50 ZINC
15	A050051	1	扒头支架 263	SQUEEGEE SUPPORT 263
16	N030008	1	平垫 6x18x1.5 镀锌	WASHER 6x18x1.5 ZINC
17	B060035	1	方头带孔螺栓 M6x25 镀锌	COUPLING M6x25 ZINC
	W010063	1	扒头支架组件 T55/T70+	SQUEEGEE SUPPORT ASSEMBLY T55+/T70+
18	B070017	1	单向拉簧 3x20x75.4	TRACTION SPRING 3x20x75.4
19	B060034	1	扒头拉线 L=355	CABLE L=355
20	A050005	1	提升摇臂 T70	LEVER T70
21	N020016	1	自锁螺母 M5 镀锌	LOCK NUT M5 ZINC
22	N020014	1	螺母 M5 镀锌	NUT M5 ZINC
23	N010024	2	外六角 M5x12 镀锌	SCREW M5x12 ZINC
24	A050006	1	开关支架 R25	SUPPORT R25

项目号 ITEM	零件号 P/N	数量 QTY	名称	DESCRIPTION
25	N040007	2	弹簧垫片 M5 镀锌	LOCK WASHER M5 ZINC
26	N020045	2	自锁螺母 M3 不锈钢	LOCK NUT M3 A2
27	E020030	1	防水微动开关 250V 16A 常闭	MICROSWITCH 250V 16A
	N030021	4	平垫 3x7x0.5 尼龙	WASHER 3x7x0.5
28	N010027	2	外六角 M3x20 不锈钢	CSREW M3x20 A2
29	N100007	1	提升摇臂把手 M12	KNOB M12
30	N010131	2	外六角 M8x55 不锈钢	SCREW M8x55 A2
31	N030010	2	平垫 8x17x1.6 不锈钢	WASHER 8x17x1.6 A2
32	N040017	2	弹簧垫片 M8 不锈钢	LOCK WASHER M8 A2
33	N020010	2	螺母 M8x5 不锈钢	NUT M8x5 A2

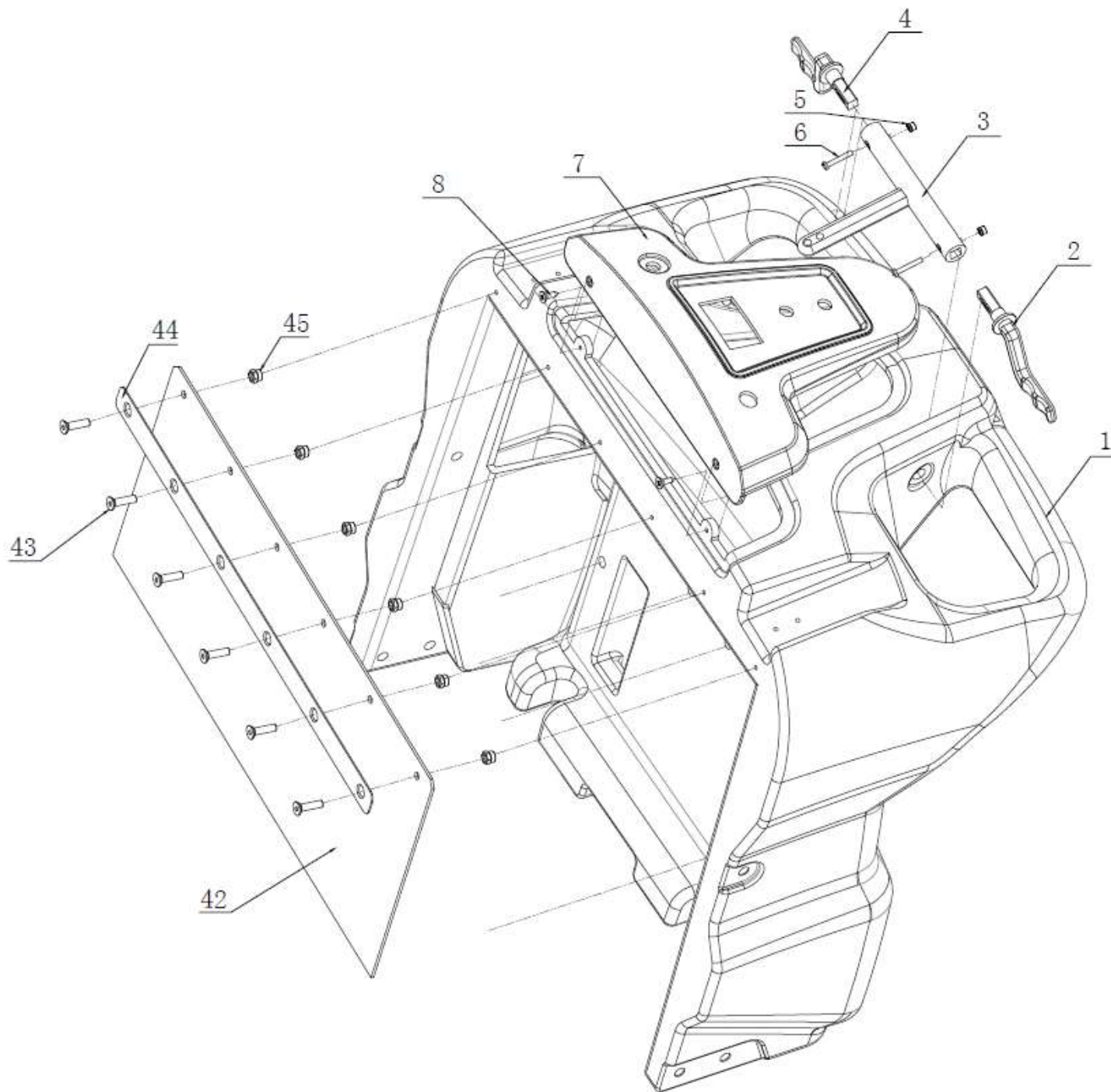




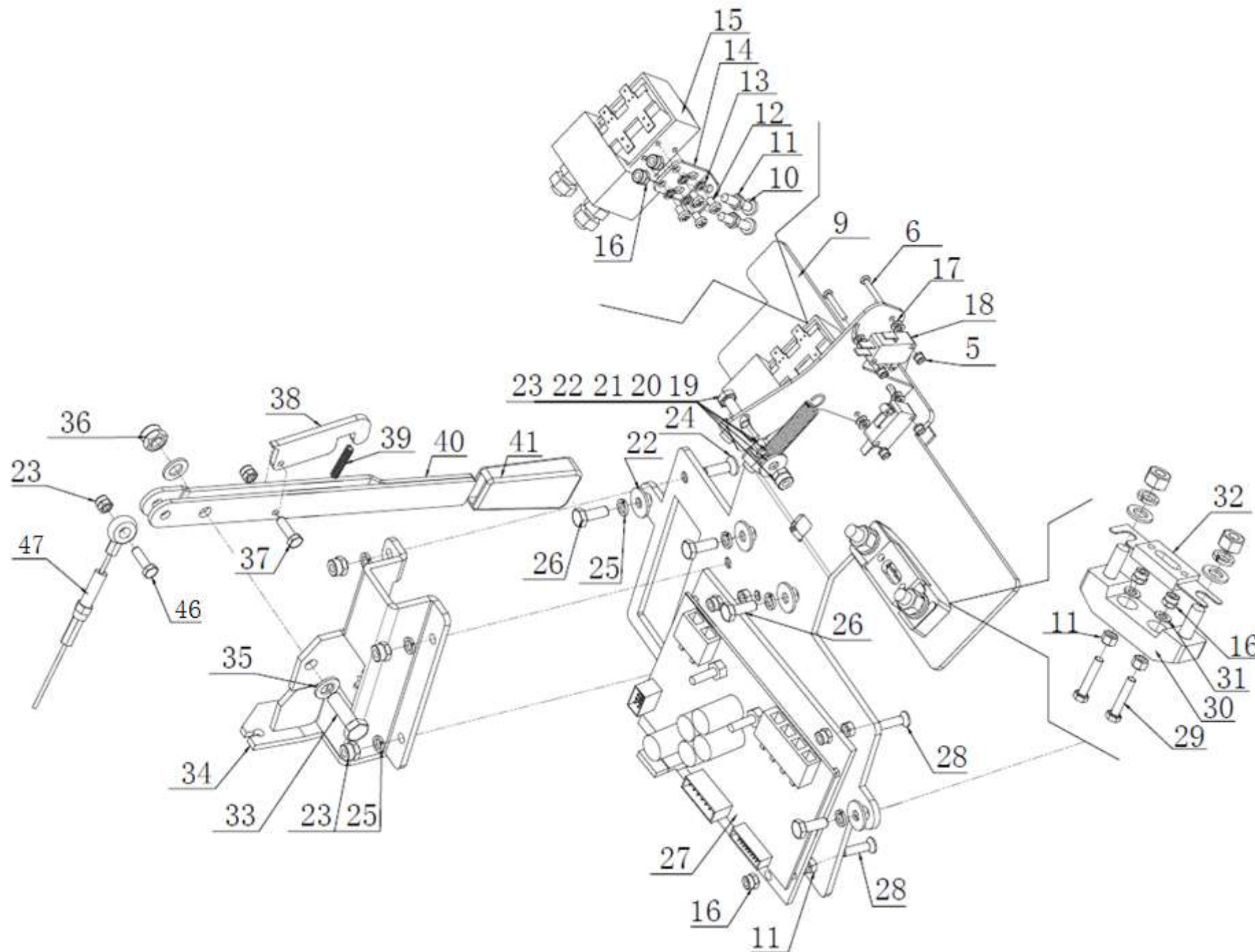
项目号 ITEM	零件号 P/N	数量 QTY	名称	DESCRIPTION
1	C020003	2	脚轮盖 Φ42	COVER Φ42
2	N010034	2	外六角 M8x20 镀锌	SCREW M8x20 ZINC
3	N040013	6	弹垫 M8 镀锌	LOCK WASHER M8 ZINC
4	B060069	2	平垫 8.2x32x4 镀锌	WASHER 8.2x32x4 ZINC
5	C020004	2	驱动轮 Φ200x50	WHEEL Φ200x50
6	B060028	2	垫圈 20X40X11	SPACER 20X40X11
7	N010033	9	外六角 M6x30 镀锌	SCREW M6x30 ZINC
8	N040001	14	弹垫 M6 镀锌	LOCK WASHER M6 ZINC
9	N030007	12	平垫 6x12x1.6 镀锌	WASHER 6x12x1.6 ZINC
10	D010010	2	轴承座 Φ70	BEARING SUPPORT Φ70
11	N070001	4	轴承 6004	BEARING 6004
12	B060027	2	轴承垫圈 20x25x21	SPACER 20x25x21
13	N060001	4	平键 6x40	FLAT KEY 6x40
14	B060026	2	驱动轴 Φ20x185	AXLE SHAFT Φ20x185
15	E080001	1	驱动电机 24V 120W 105RPM	GEARED MOTOR 24V 120W 105RPM
16	C020002	4	哈氟块 23	HOLDFAST 23
17	N010014	2	圆头方颈螺栓 M8x25 镀锌	SCREW M8x25 ZINC
18	N010010	2	外六角 M8x50 镀锌	SCREW M8x50 ZINC
19	N020018	4	螺母 M8 镀锌	NUT M8 ZINC
20	A030004	1	连接板 55x40	PLAQUE 55x40
21	A030003	1	电瓶挡板 448	SPLASH GUARD 448
22	N010006	2	外六角 M6x20 镀锌	SCREW M6x20 ZINC
23	N030008	3	平垫 6x18x1.6 镀锌	WASHER 6x18x1.6 ZINC
24	N020012	3	自锁螺母 M6 镀锌	LOCK NUT M6 ZINC



项目号 ITEM	零件号 P/N	数量 QTY	名称	DESCRIPTION
25	N010114	4	外六角 M6x45 镀锌	SCREW M6x45 ZINC
26	A030001	1	刹车连杆 265	ROCKER ARM 265
27	A030002	1	底座架 450x222	FRAME 450x222
28	N030006	4	平垫 8x16x1.6 镀锌	WASHER 8x16x1.6 ZINC
29	N020001	5	自锁螺母 M8 镀锌	LOCK NUT M8 ZINC
31	B070003	1	拉簧 2.8x20x93	SPRING 2.8x20x93
32	W010018	1	水路组件 T55	WATER ASEEMPLY T55
33	N010091	4	圆头方颈 M8x20 镀锌	SPECIAL SCREW M8x20 ZINC
34	N110004	1	万向轮 Φ100	UNIVERSAL WHEEL Φ100
35	N020019	2	自锁螺母 M3 镀锌	LOCK NUT M3 ZINC
36	N010115	2	外六角 M3x20 镀锌	SCREW M3x20 ZINC
37	N020002	1	自锁螺母 M10 镀锌	LOCK NUT M10 ZINC
38	A030005	1	脚踏限位挡板 109x33	GUARD 109x33
39	N040021	4	塑料垫片 3x7x0.5	PLASTIC GASKET 3x7x0.5
40	<b>E020030</b>	<b>1</b>	<b>防水微动开关 250V 16A 常闭</b>	<b>MICROSWITCH 250V 16A</b>
41	N040003	1	弹垫 M10 镀锌	LOCK WASHER M10 ZINC
42	N010060	1	外六角 M10x25 镀锌	SCREW M10x25 ZINC
	W010004	1	底座架组件 T55BT/70BT	FRAME ASEEMPLY T55BT/70BT

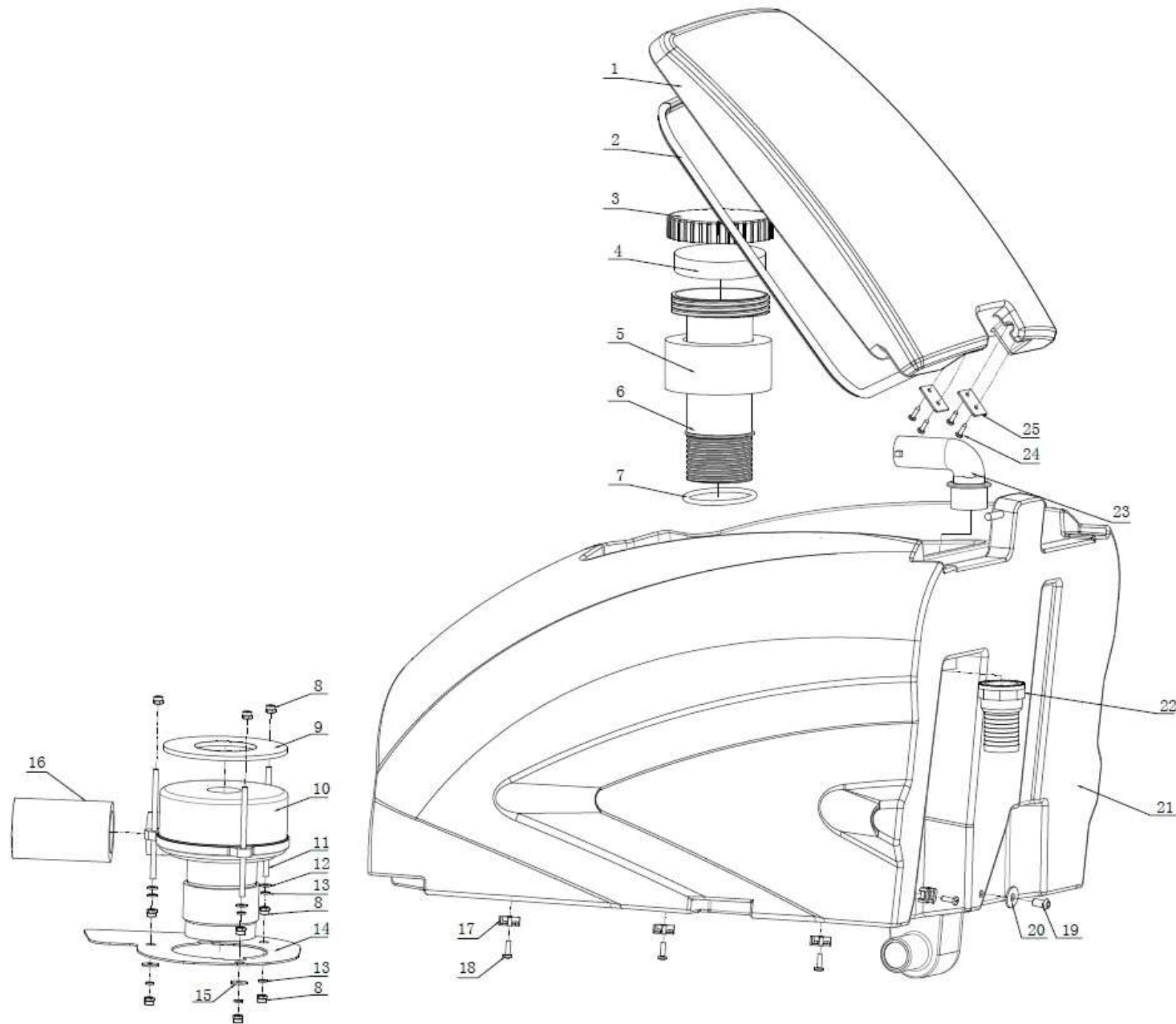


项目号 ITEM	零件号 P/N	数量 QTY	名称	DESCRIPTION
1	C010004	1	手柄盒	HANDLE BOX
2	C020016	1	左操控把手	LEFT HANDLE
3	C020017	1	操控连接杆	ROCKER ARM
4	C020015	1	右操控把手	RIGHT HANDLE
5	N020019	6	自锁螺母 M3 镀锌	LOCK NUT M3 ZINC
6	N010071	6	圆头十字 M3x20 镀锌	SPECIAL SCREW M3x20 ZINC
7	W010006	1	控制面板组件 T55BT/70BT	CONTROL PANEL ASEMBLY T55BT/70BT
8	N010111	2	沉头十字自攻 3.5x13 不锈钢	SPECIAL SCREW 3.5x13 A2
9	A020001	1	电路板支架 294	CIRCUIT BOARD SUPPORT 294
10	N010004	2	外六角 M5x20 不锈钢	SCREW M5x20 A2
11	N020046	8	螺母 M5 不锈钢	NUT M5 A2
12	N010113	4	圆头十字 M4x6 不锈钢	SPECIAL SCREW M4x6 A2
13	N040019	4	弹垫 M4 不锈钢	LOCK WASHER M4 A2
14	A030010	1	直流接触器支架 16x24x33	CONTACTOR SUPPORT 16x24x33
15	E030002	1	直流接触器 24V 80A	DC CONTACTOR 24V 80A
16	N020037	9	自锁螺母 M5 不锈钢	LOCK NUT M5 A2
17	N040021	8	塑料垫片 3x7x0.5	PLASTIC GASKET 3x7x0.5
18	E020029	2	防水微动开关 250V 16A 常开	MICROSWITCH 250V 16A
19	N010006	1	外六角 M6x20 镀锌	SCREW M6x20 ZINC
20	N020022	1	螺母 M6 镀锌	NUT M6 ZINC
21	B070011	1	弹簧 0.8x10x55	SPRING 0.8x10x55
22	N030008	5	平垫 6x18x1.6 镀锌	WASHER 6x18x1.6 ZINC
23	N020012	4	自锁螺母 M6 镀锌	LOCK NUT M6 ZINC
24	N010016	3	沉头内六角 M6x20 不锈钢	SPECIAL SCREW M6x20 ZINC
25	N040001	7	弹垫 M6 镀锌	LOCK WASHER M6 ZINC
26	N010005	4	外六角 M6X16 镀锌	SCREW M6X16 ZINC
27	E050010	1	集成控制器 24V 80A	INTEGRATED CONTROLLER 24V 80A

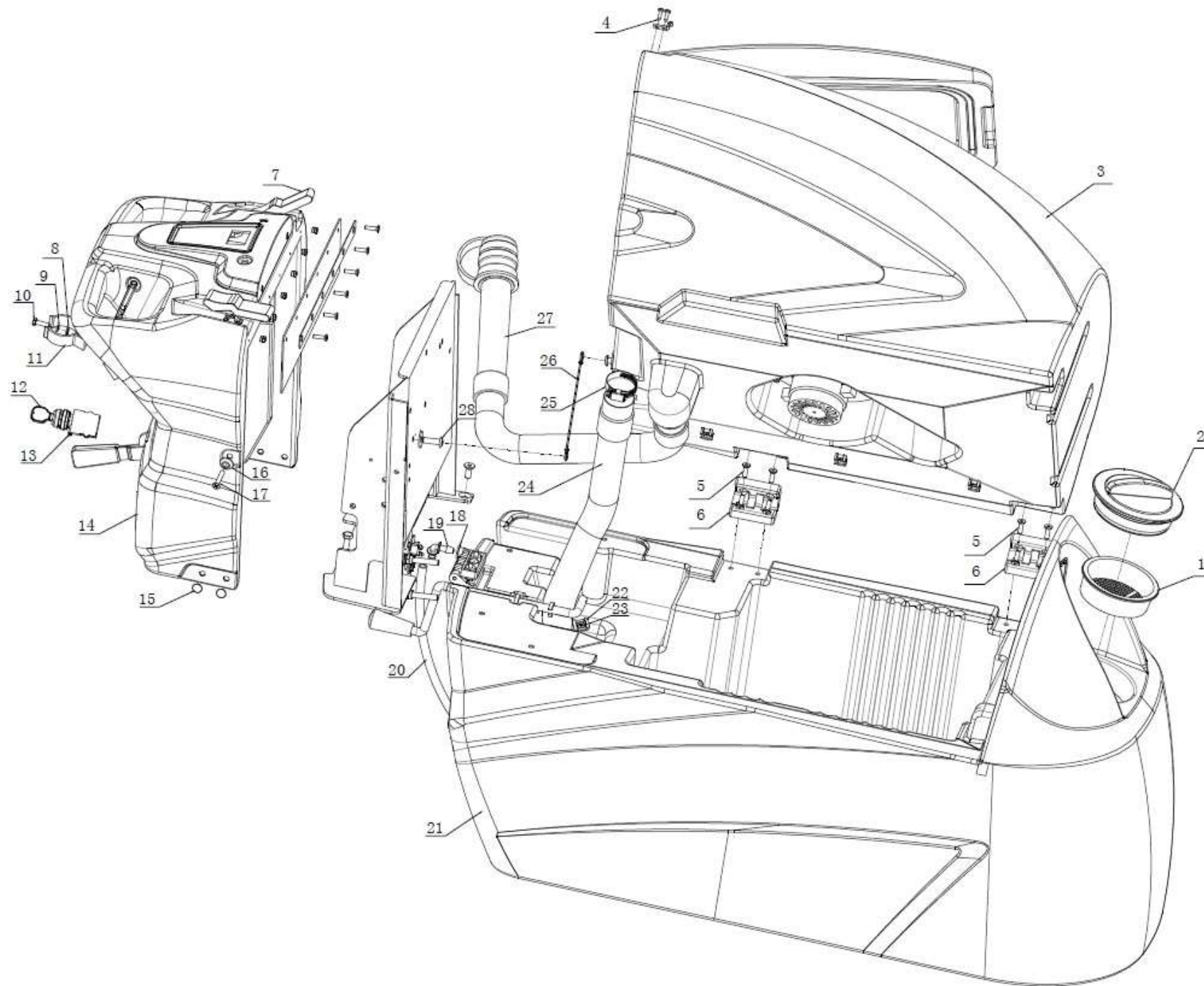


项目号 ITEM	零件号 P/N	数量 QTY	名称	DESCRIPTION
28	N010066	4	内六角沉头 M5x25 不锈钢	SPECIAL SCREW M5X25 A2
29	N010149	2	外六角 M5x25 不锈钢	SCREW M5x25 A2
30	E050004	1	保险座 80A	FUSE SUPPORT 80A
31	N030016	2	平垫 5x10x1 不锈钢	WASHER 5x10x1 A2
32	E050005	1	保险 80A	FUSE 80A
33	N010007	1	外六角 M8x25 镀锌	SCREW M8x25 ZINC
34	A020004	1	刹车手柄支架 130x57.5	BRAKE HANDLE SUPPORT 130x57.5
35	N030006	2	平垫 8x16x1.6 镀锌	WASHER 8x16x1.6 ZINC
36	N020001	1	自锁螺母 M8x6.5 镀锌	LOCK NUT M8x6.5 ZINC
37	N010029	1	外六角 M5x16 不锈钢	SCREW M5x16 A2
38	A050008	1	刹车锁 Φ4	BRAKE LOCK Φ4
39	B060032	1	刹车压簧 0.5x5x25	SPRING 0.5x5x25
40	A020003	1	刹车手柄 240x20	BRAKE HANDLE 240x20
41	N090003	1	刹车手柄胶套 20x60	RUBBER SLEEVE 20x60
42	B050027	1	手柄盒挡板 T70	BAFFLE T70
43	N010118	6	沉头内六角 M5X20 镀锌	SPECIAL SCREW M5X20 ZINC
44	A060004	1	手柄盒橡胶压条 400x20	LAYERING 400x20
45	N020016	6	自锁螺母 M5 镀锌	LOCK NUT M5 ZINC
	W010067	1	手柄盒组件 T55/70+	HANDLE BOX ASSEMBLY T55/70+
46	N010006	1	外六角 M6x20 镀锌	SCREW M6x20 ZINC
23	N020012	1	自锁螺母 M6 镀锌	LOCK NUT M6 ZINC
47	B060101	1	刹车线 L=1180	BRAKE CABLE L=1180

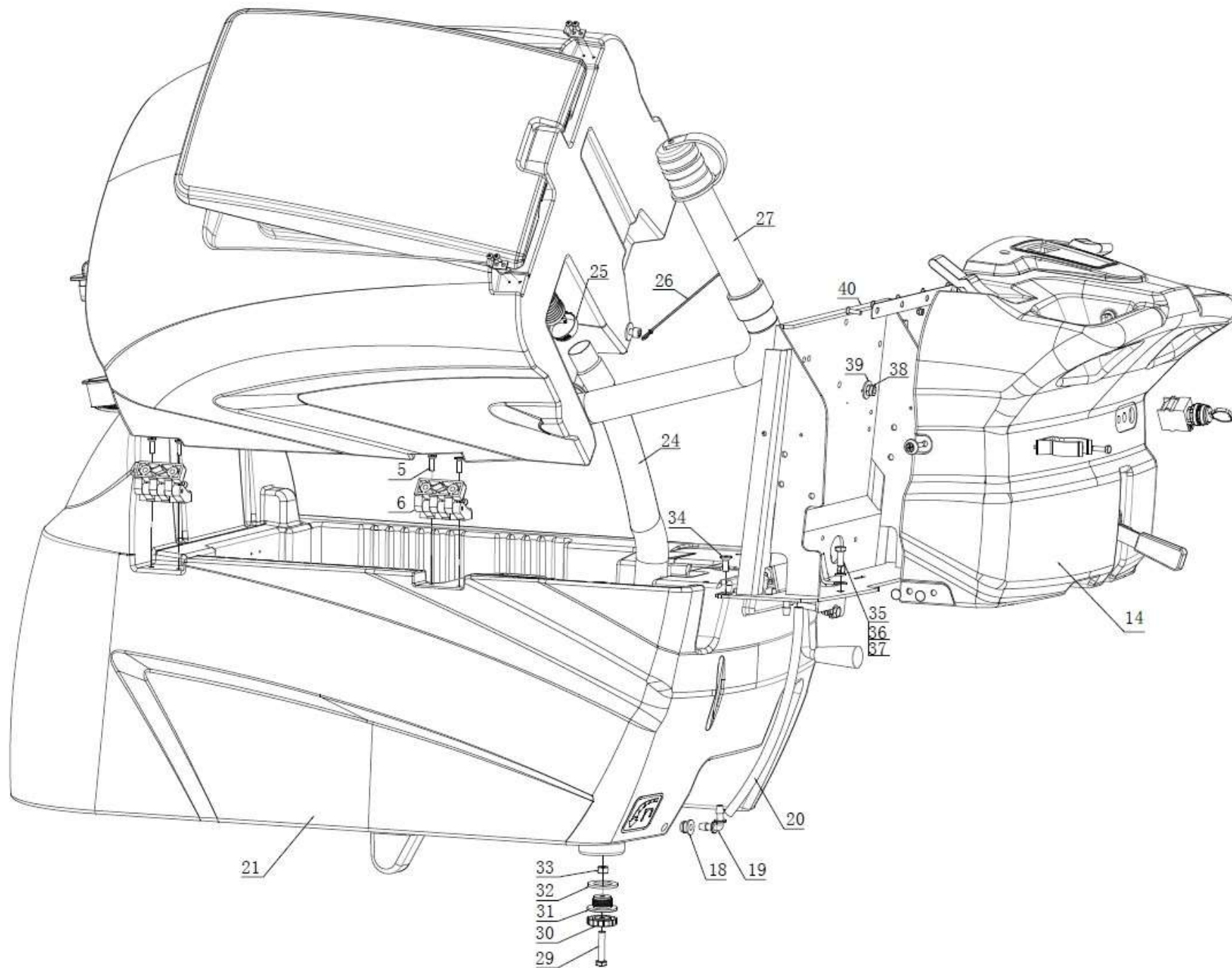




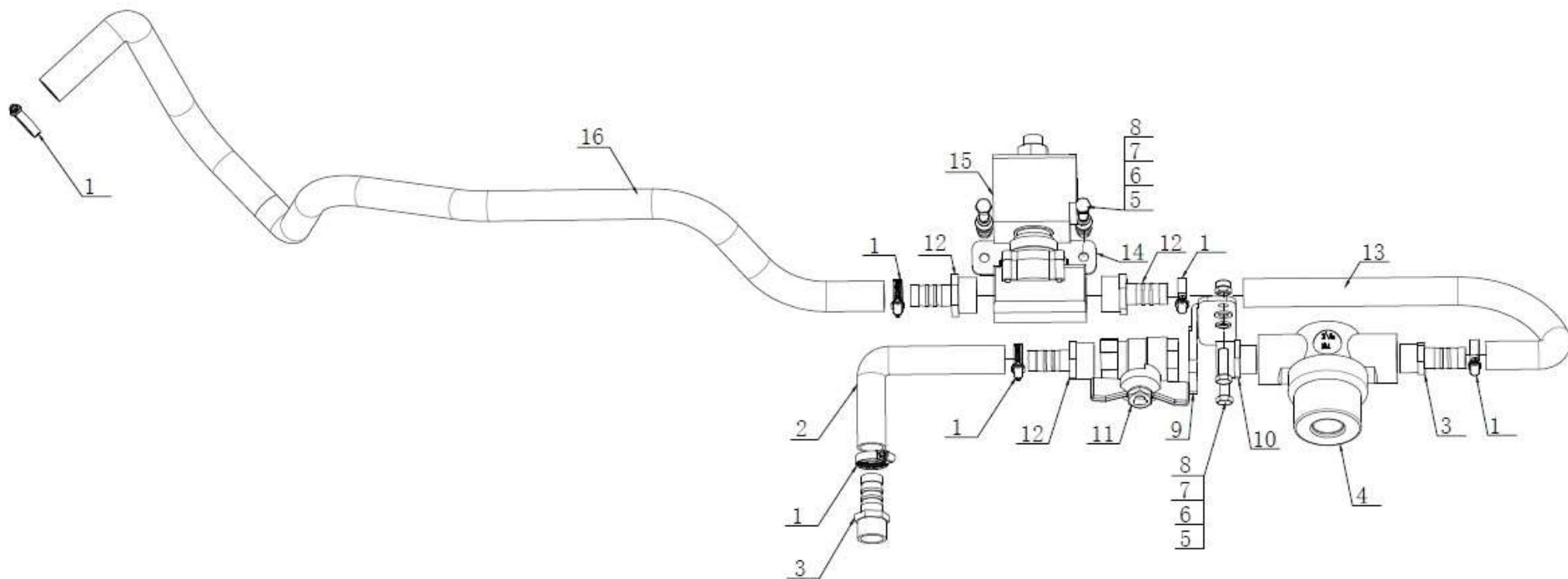
项目号 ITEM	零件号 P/N	数量 QTY	名称	DESCRIPTION
1	C010003	1	污水箱上盖 T55/70	COVER T55/70
2	N090010	1	上盖密封条 L=1280	WEATHERSTRIP L=1280
3	C020019	1	吸水口盖子 Φ118x24	COVER Φ118x24
4	F040002	1	吸水口消音海绵 Φ103x20	SPONGE Φ103x20
5	F040004	1	浮球 Φ80x64	FLOATING BALL Φ80x64
6	C020018	1	吸水口主体 Φ74x210	BODY Φ74x210
7	N090015	1	O 型密封圈 φ71x5	O RING φ71x5
8	N020012	9	自锁螺帽 M6x6 镀锌	LOCK NUT M6x6 ZINC
9	F040001	1	吸水电机消音垫 Φ140x5	CUSHION Φ140x5
	F040005	1	3M 背胶 Φ (140-70)	3M Φ (140-70)
10	E040001	1	吸水电机 24V 390W 119436-13	MOTOR 24V 390W 119436-13
11	N100001	3	螺杆 M6x125mm	SCREW M6x125mm
	B050029	3	支撑套管 55	SLEEVING 55
12	N030007	3	平垫 6x12x1.6 镀锌	WASHER 6x12x1.6 ZINC
13	N040001	6	弹垫 M6 镀锌	LOCK WASHER M6 ZINC
14	A060002	1	吸水电机盖板	COVER
15	N030008	3	垫片 6x18x1.5 镀锌	WASHER 6x18x1.5 ZINC
16	F040003	1	吸水电机消音棉 Φ (68-48) x110	COTTON Φ (68-48) x110
17	N090002	4	扎带固定座 23x16	SUPPORT 23x16
18	N010073	4	圆头十字螺丝 M5x16 不锈钢	SPECIAL SCREW M5x16 A2
19	N010133	1	圆头内六角 M8x16 不锈钢	SPECIAL SCREW M8x16 A2
20	N030028	1	平垫 8x24x2 不锈钢	WASHER 8x24x2 A2
21	C010002	1	污水箱 70L	RECOVERY TANK 70L
22	C020009	1	污水进水口直接头 D. 38	CONNECTOR D. 38
23	C020008	1	污水进水口弯头 D. 38	CONNECTOR D. 38
24	N010052	4	圆头十字自攻螺丝 M4. 2x16 不锈钢	SPECIAL SCREW M4. 2x16 A2
25	A010001	2	箱盖固定板 34x30	PLAQUE 34x30
	W010007	1	污水箱组件 T70	RECOVERY ASEMBLY T70



项目号 ITEM	零件号 P/N	数量 QTY	名称	DESCRIPTION
1	C020006	1	清水箱注水口滤网 Φ110	FILTER Φ110
2	C020005	1	清水箱注水口盖子 Φ115	THREADED COVER Φ115
3	W010007	1	污水箱组件 T70	RECOVERY TANK ASEEMBLY T70
4	N010052	8	圆头十字自攻螺丝 4.2x16 不锈钢	SPECIAL SCREW 4.2x16 A2
5	N010016	12	沉头内六角 M6x20 不锈钢	SPECIAL SCREW M6x20 A2
6	C020011	3	合页 40x14	HINGE 40x14
7	N090004	2	橡胶搭扣 50	HASP 50
8	N030031	1	平垫 5x11x1 镀锌	WASHER 5x11x1 ZINC
9	N040007	1	弹垫 M5 镀锌	LOCK WASHER M5 ZINC
10	N010062	1	外六角 M5x20 镀锌	SCREW M5x20 ZINC
11	C020014	1	管托 Φ43	SCREW CLAMP Φ43
12	E020026	2	钥匙 双开	LOCK
	N090031	2	钥匙挂件	KEY ACCESSORIES
13	E020025	1	钥匙开关全电压 21A 双开	SWITCH 21A
14	W010052	1	手柄盒组件 T70BT	HANDLE BOX ASEEMBLY T70BT
15	N090025	4	孔堵头 ϕ8	PLUG ϕ8
16	C020028	2	异形垫片 Φ5	SPECIAL WASHER Φ5
17	N010067	2	沉头十字 M5x45 不锈钢	SPECIAL SCREW M5x45 A2
18	C030013	2	密封垫 Φ8	GASKET Φ8
19	F020001	2	快速接头 Φ(8-6)x30	CONNECTOR Φ(8-6)x30
20	F050008	1	水位显示管 310	HOSE 310
21	C010001	1	清水箱 T70	SOLUTION TANK T70
22	N090002	1	扎带固定座 23x16	SUPPORT 23x16
23	N010073	1	圆头十字螺丝 M5x16 不锈钢	SPECIAL SCREW M5x16 A2
24	F060002	1	吸污管 D. 38x1100	SUCTION HOUSE D. 38x1100

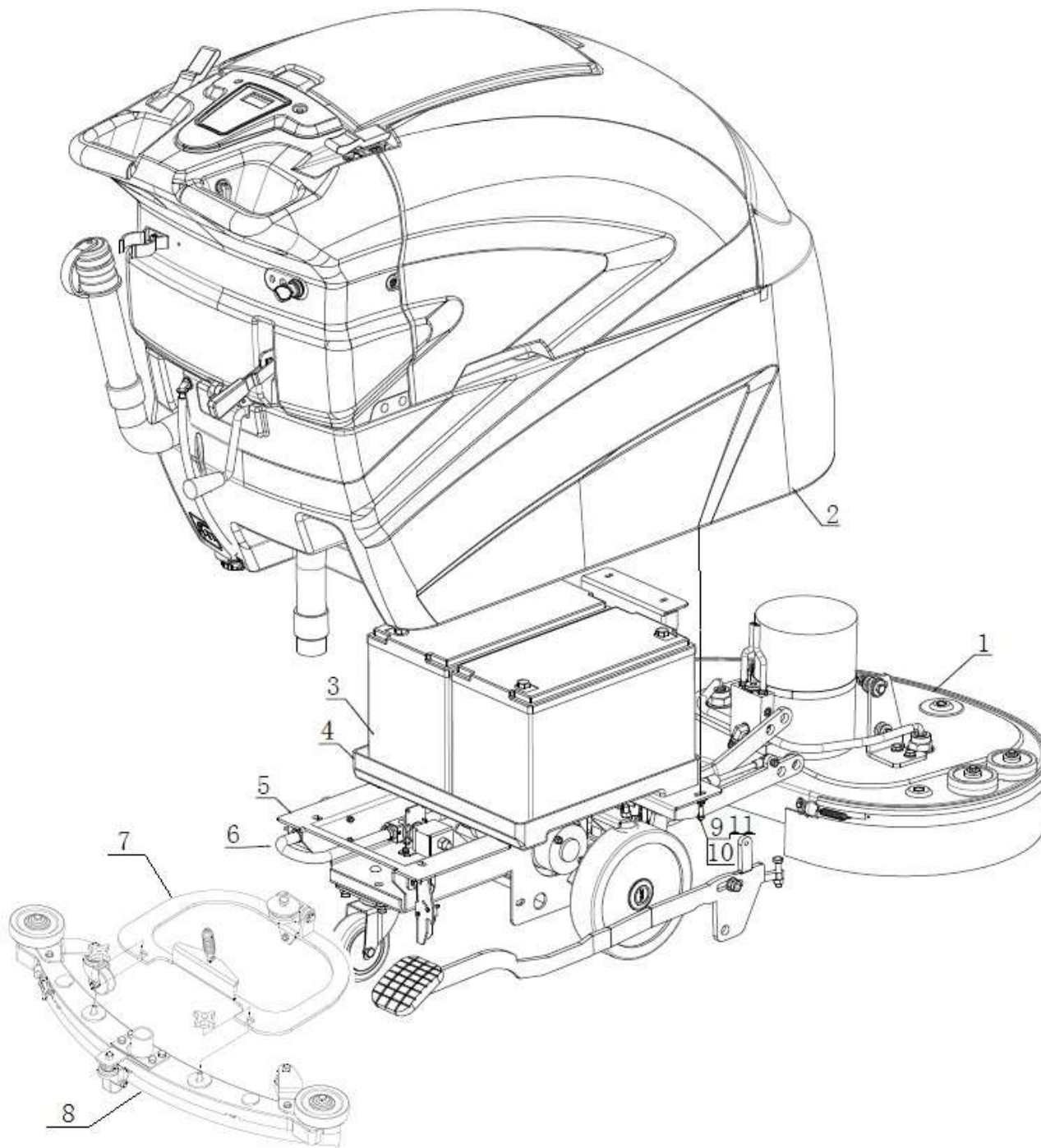


项目号 ITEM	零件号 P/N	数量 QTY	名称	DESCRIPTION
25	F050006	2	卡箍 Φ33-57	SCREW CLAMP Φ33-57
26	B060084	1	水箱拉线 L=345	CABLE L=345
	B060033	2	手柄盒拉线 L=210	CABLE L=210
	N010005	2	外六角 M6x16 镀锌	SCREW M8X40 ZINC
	N020012	2	自锁螺母 M6 镀锌	NUT M6 ZINC
27	F060001	1	排污管 D. 38X800	SEWAGE PIPE D. 38X800
28	N010045	1	圆头内六角 M8x25 不锈钢	SPECIAL SCREW M8x25 A2
29	N010068	1	外六角 M8X40 不锈钢	SCREW M8X40 A2
30	N020009	1	花型螺母 M8	HANDWHEEL M8
31	B020006	1	堵头 3/4"	PLUG 3/4"
32	B050014	1	堵头橡胶垫片 25x40x3	RUBBER WASHER 25x40x3
33	N020010	1	螺母 M8 不锈钢	NUT M8 A2
34	N010019	1	沉头内六角 M8x18 镀锌	SPECIAL SCREW M8x18 ZINC
35	N010034	3	外六角 M8x20 镀锌	SCREW M8X20 ZINC
36	N040013	3	弹垫 M8 镀锌	WASHER M8 ZINC
37	N030006	3	平垫 8x16x1.6 镀锌	WASHER 8x16x1.6 ZINC
38	N020024	1	自锁螺母 M8 不锈钢	LOCK NUT M8 A2
39	N030028	2	平垫 8x24x2 不锈钢	WASHER 8x24x2 A2
40	A020002	1	手柄盒支架 T70	SUPPORT T70
	W020013		钥匙开关组件 Φ22 双开	LOCK ASSEMBLY Φ22
	W020001		堵头组件 3/4"	PLUG ASEEMBLY 3/4"
	W010008	1	水箱体组件 T70	TANK ASEEMBLY T55BT

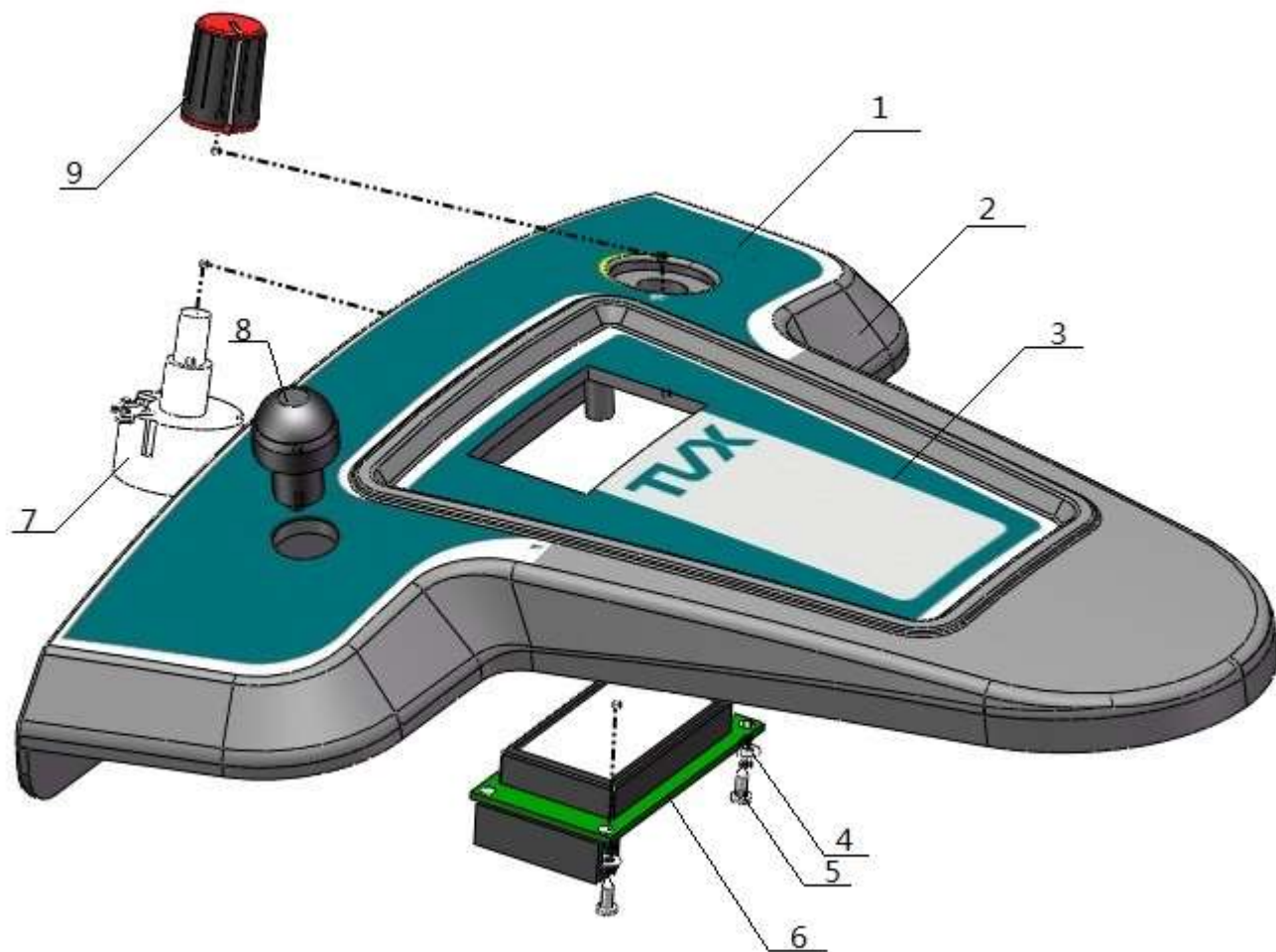


项目号 ITEM	零件号 P/N	数量 QTY	名称	DESCRIPTION
1	<b>F050007</b>	<b>6</b>	卡箍 $\phi 8-16$	<b>SCREW CLAMP <math>\phi 8-16</math></b>
2	F050012	1	内嵌钢丝水管 D=18 D=13 L= 100	WATER PIPE D=18 D=13 L= 100
3	F020003	2	快速接头 3/8 D=10	CONNECTOR 3/8 D=10
4	F010004	1	过滤器 3/8	FILTER 3/8
5	N010029	4	外六角 M5x16 不锈钢	SCREW M5x16 A2
6	N040023	4	弹垫 M5 不锈钢	LOCK WASHER M5 A2
7	N030016	4	平垫 5x10x1 不锈钢	WASHER 5x10x1 A2
9	A030012A	1	球阀支架 30x44	BALL VALVE SUPPORT 30x44
10	F020006	1	外丝接头 1/2—3/8	CONNECTOR 1/2—3/8
11	<b>F010006</b>	<b>1</b>	蝶形球阀 1/2 直接头 D=10	<b>BALL VALVE 1/2</b>
12	<b>F020002</b>	<b>3-1</b>	快速接头 1/2	<b>CONNECTOR 1/2</b>
13	F050013	1	内嵌钢丝水管 D=18 D=13 L=250	WATER PIPE D=18 D=13 L=250
14	A060016	1	电磁阀支架 20x20	SOLENOID VALVE SUPPORT 20x20
15	E010002	1	电磁阀 24V 10W	SOLENOID VALVE 24V 10W
16	F050014	1	内嵌钢丝水管 D=18 D=13 L=600	WATER PIPE D=18 D=13 L=600
	W010018		水路组件 T55	WATER ASSEMBLY T55





项目号 ITEM	零件号 P/N	数量 QTY	名称	DESCRIPTION
1	W010001	1	机头组件 T70	NOSE ASEEMBLY T70
2	W010008	1	水箱体组件 T70	TANK ASEEMBLY T70
3	E040006	2	电池 12V 100AH	BATTERY 12V 100AH
4	C020010	1	电池座 370x364x45	BATTERY SUPPORT 370x364x45
5	W010004	1	底座架组件 T55BT/T70BT	FRAME ASEEMBLY T55BT/T70BT
6	W010018	1	水路组件 T55	WATER ASEEMBLY T55
7	W010063	1	扒头支架组件 263	SQUEEGEE SUPPORT ASEEMBLY 263
8	W010045	1	扒头组件 760	SQUEEGEE ASEEMBLY 760
9	N010005	6	外六角 M6x16 镀锌	SCREW M6x16 ZINC
10	N040001	6	弹垫 M6 镀锌	LOCK WASHER M6 ZINC
11	N030007	6	平垫 6x12x1.6 镀锌	WASHER 6x12x1.6 ZINC
	C040025	1	提升摇臂标识	LEVER LABEL
	C040026	1	刹车标识	BRAKE LABEL
	C040003	1	机器左侧标签	DECAL LEFT
	C040004	1	机器右侧标签	DECAL RIGHT
	C040007	1	标识标签 T70	DECAL T70
	Z090027	1	洗地机 T70/65BT+	SCRUBBER T70/65BT+



项目号 ITEM	零件号 P/N	数量 QTY	名称	DESCRIPTION
1	C040001	1	控制面板标签 T55BT	DECAL T55BT
2	C020013	1	控制面板 T55/70	CONTROL PANEL T55/70
3	C040002	1	控制面板标签 T55/70	DECAL T55/70
4	N030038	3	平垫 2x5x0.3 不锈钢	WASHER 2x5x0.3 A2
5	N010046	3	盘头十字自攻螺丝 2.2x6.5 不锈钢	AUTOF SCREW 2.2x6.5 A2
6	E080002	1	液晶显示屏 8x2	SCREEN 8x2
7	E020003	1	调速开关	SPEED SWITCH
8	E020001	1	选择按钮	BUTTON
9	E020009	1	调速开关旋帽	TURN CAP
	E050063	1	一体式电路板液晶显示信号线 2x8 L=600	SIGNAL LINE FOR INTEGRATED CIRCUIT BOARD 2x10 L=60
	W010006		控制面板组件 T55BT/70BT	CONTROL PANEL ASEMBLY T55BT/70BT